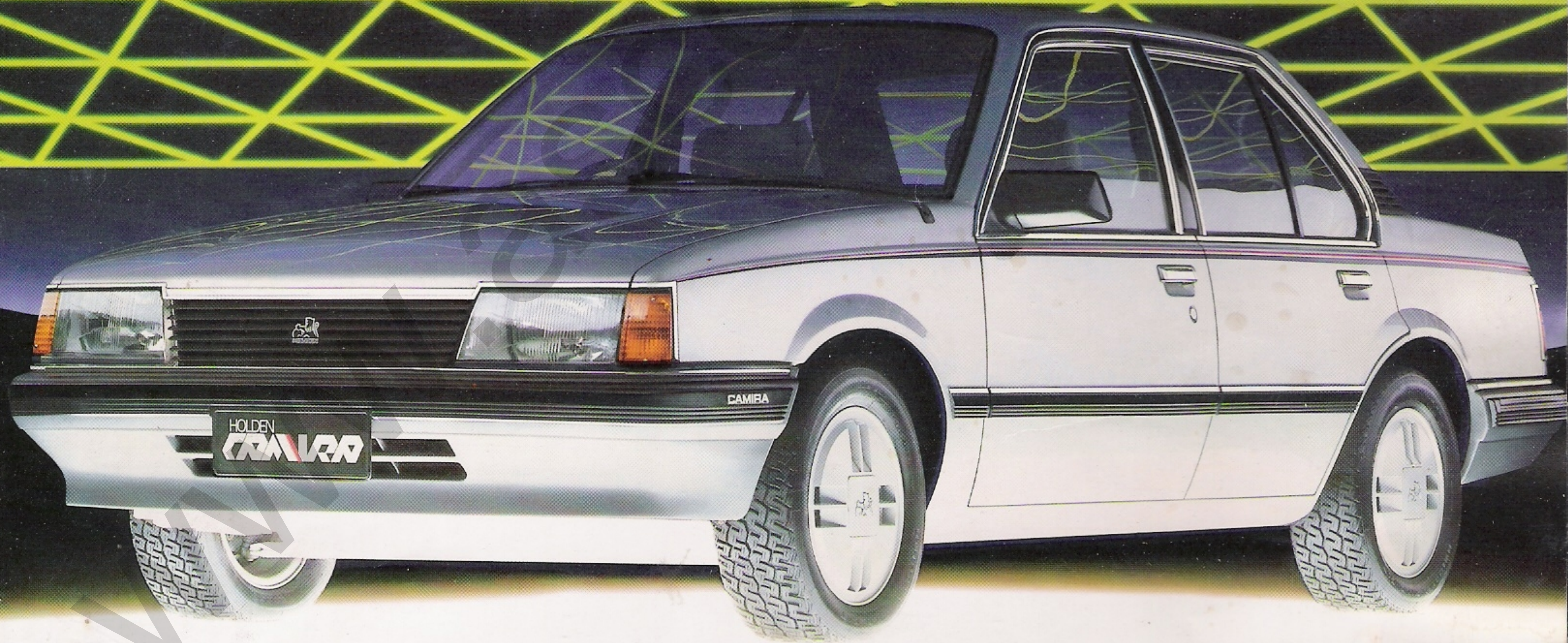


SUPERCAR



MAX KELLETT HOLDEN
131 HENRY PARRY DRIVE, GOSFORD.

HOLDEN 
CAMIRA

ALL-NEW HOLDEN CAMIRA

Automotive technology in its newest, most efficient, most exciting form!

General Motors-Holden's is proud to present the Holden Camira.

A Supercar.

The most advanced 5-passenger Australian car ever. It fits perfectly between Holden Commodore and Holden Gemini.

Camira's super-efficiency is expressed in a lot of ways that really mean something. **▲** Totally new styling, aerodynamically designed to cheat the wind, and cut fuel costs **▲** Camtech 4—an all-new overhead camshaft 1.6 litre powerhouse which outperforms larger engines with 160 kmh (100 mph) performance and 44 mpg (6.4 litres per 100 km) highway economy (Figures derived from Aust. Standard



The basic car, with a lot more than just basics.

Exterior

▲ Camtech 4 transverse engine with Front Wheel Drive **▲** Overhead camshaft **▲** Hall Effect electronic ignition **▲** Engine Management Module incorporating Electronic Emissions and Engine Economy System **▲** Crossflow radiator with high energy

core **▲** Coolant recovery system **▲** 4-speed manual transmission **▲** Variable Ratio rack and pinion steering **▲** Coil Springs at all four wheels **▲** Front stabiliser bar **▲** Rear stabiliser bar **▲** Radial Tuned Suspension **▲** Power brakes: front disc/rear drum **▲** Aero styled exterior R.V. mirror with breakaway safety feature **▲** Wide full length body side mouldings **▲** Recessed lock-down radio

antenna **▲** Quartz halogen headlights **▲** High intensity reversing lights **▲** Polypropylene splash guards in front fender liners to prevent mud packing and stone damage **▲** Corrosion protection package.

Interior

▲ 12 heating/ventilation outlets including side window demisters **▲** Soft-rim steering wheel **▲** Reclining front bucket seats **▲** Front seat head restraints **▲** High density sound insulating materials on floor, roof and luggage area **▲** Tray-type locking glove compartment **▲** Heated rear window **▲** Vacuum Economy

Gauge **▲** AM Radio **▲** Digital Clock **▲** Central dome light activated by all doors **▲** Secondary weather strips for improved dust sealing **▲** Dust sealing panels at base of body pillars **▲** Armrests on all four doors **▲** Overhead grab handles for passengers **▲** Rear coat hooks **▲** Rear ashtray **▲** Illuminated cigarette lighter

▲ Trip meter in speedometer **▲** Fuel and temperature gauges **▲** Brake failure and parking brake warning lights **▲** "Child-proof" rear door locks **▲** Child restraint anchorage points for rear seat.



Flagship prestige blended with big-car luxury.

Standard equipment (in addition to SL/X Model features).

Exterior

▲ Cast alloy wheels **▲** Low profile tyres **▲** Power radio antenna **▲** Remote LHS mirror **▲** Door surround bright mouldings **▲** Pin striping.

Interior

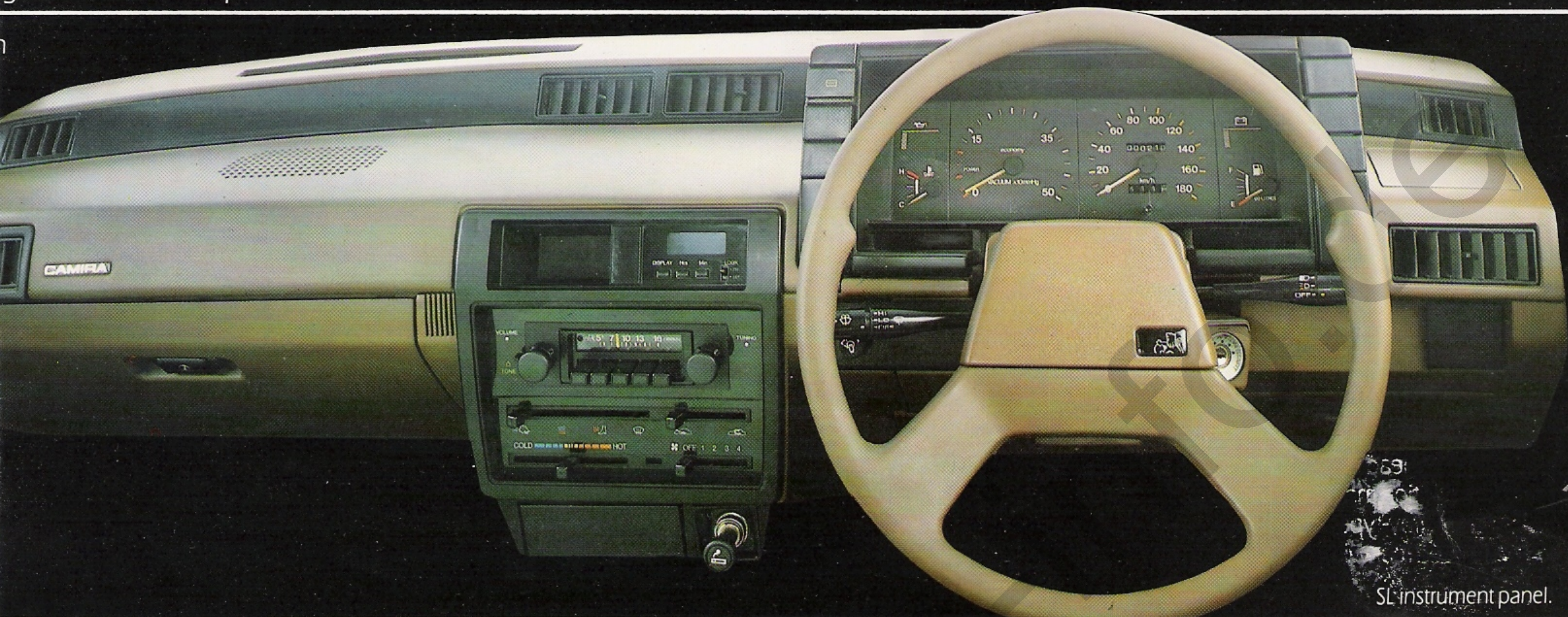
▲ 5-speed manual transmission **▲** Tweed seat trim **▲** Rear seat head bolsters **▲** Cut pile carpet **▲** Tachometer (replaces Economy Gauge) **▲** 2 additional stereo speakers (Total 4) **▲** Remote boot release **▲** Vanity mirror **▲** Adjustable driver's seat: height and lumbar support **▲** Door ajar warning light **▲** Fully trimmed boot carpet **▲** Tinted side and rear glass **▲** Tweed insert on upper door trim **▲** Cut pile cowl trim panel **▲** Velour head lining **▲** Oil pressure and volt meter gauges.



2077-1979 tests) ▲ Transverse engine location gives you maximum legroom within compact overall dimensions ▲ A superb boot—bigger than the roomiest of comparable cars ▲ Front wheel drive for tenacious roadholding ▲ Super-quietness—Camira is measurably quieter than any car in its class ▲ Variable Ratio rack and pinion steering—an all-new world-patented

Australian design that gives you much lighter parking steering ▲ Coil spring suspension at all four wheels with a compound crank torsion beam rear axle that gives you the effect of independent suspension all round ▲ Ride and super-precise handling which gives the owners of exotic European sports sedans a big surprise.

Holden Camira driving excitement comes in your choice of SL and SL/X models with 4-speed manual transmission, or SL/E with 5-speed, with the option of a completely new 3-speed automatic transmission on any model. Is Camira reliable? Two years of testing around Australia and at GMH's Victorian Proving Ground have made it one of the most durable cars of its size in the world.



SL instrument panel.

More luxury for just a little extra.

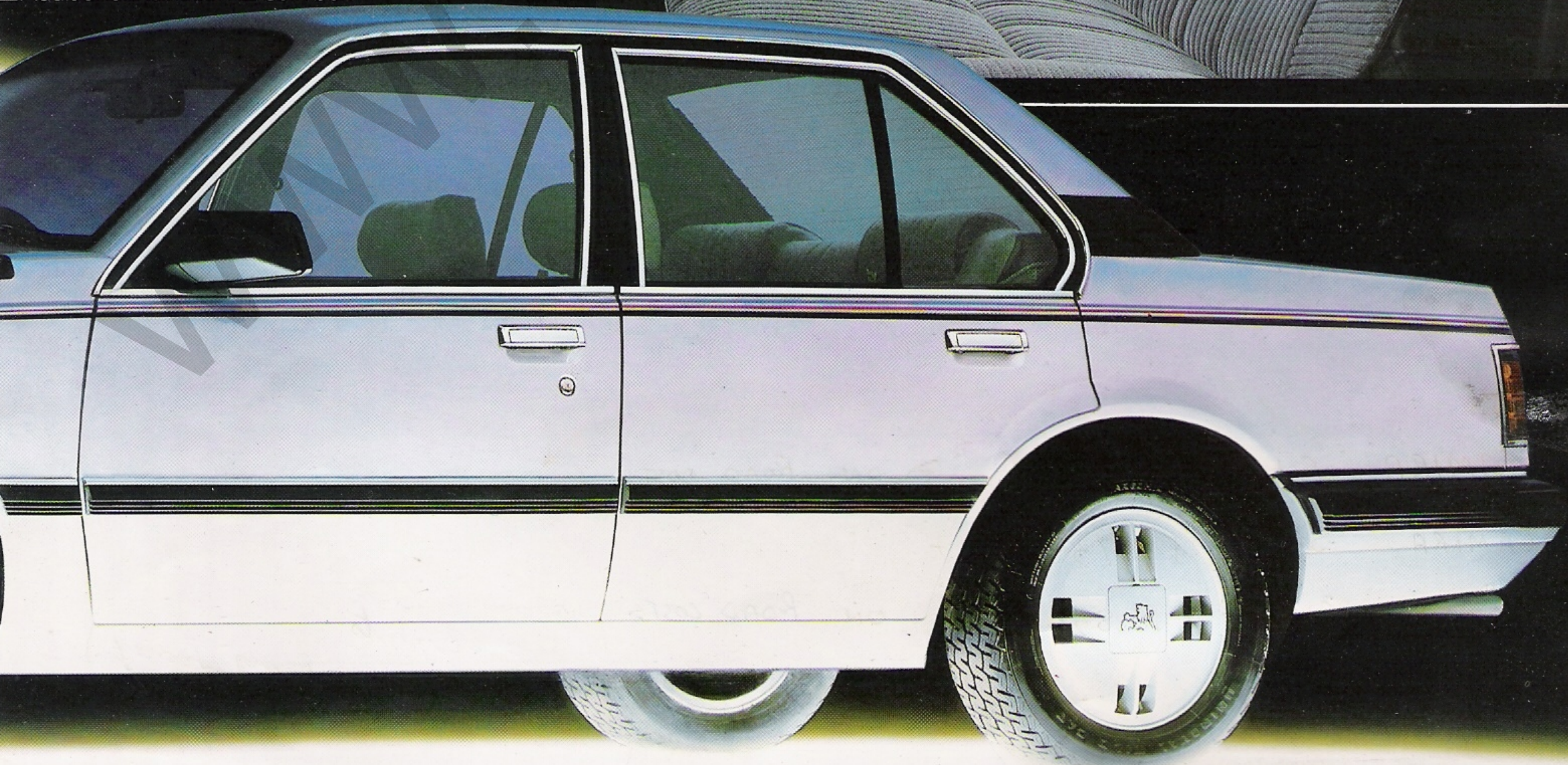
Standard equipment (in addition to SL model features).

Exterior

▲ Chrome wheel trim rings ▲ Centre wheel trims ▲ Bumper rub strips ▲ Tinted band laminated windscreen ▲ Black side window frame surrounds ▲ Rear end bright moulding.

Interior

▲ Carpet on lower door trim ▲ Vinyl door insert ▲ AM/FM stereo radio cassette, two speakers ▲ Intermittent windscreen wipers ▲ Cord cloth seating ▲ Glove box light ▲ Driver's seat height adjuster ▲ Rear door grip handles ▲ Remote control driver's exterior mirror ▲ Boot floor carpet ▲ Outboard rear seat retracting seat belts ▲ Additional insulation ▲ Coin box



OPTIONAL EQUIPMENT

All three Camira models are comprehensively equipped. For this reason the list of optional extra-cost items is not extensive. For full details of options and prices, please check with your Holden Dealer.

Exterior	SL	SLX	SLE	Interior	SL	SLX	SLE
▲ Remote control outside rear view mirror				▲ Turbo Hydramatic automatic transmission	O	O	O
passenger side	O	O	S	▲ Rear seat lap & shoulder belts with concealed retractors	O	S	S
▲ Remote control outside rear view mirror				▲ Trip computer		O	O
driver's side	O	S	S	▲ Air conditioning	O	O	O
▲ Special finish metallic paint	O	O	S	▲ Cord cloth trim	O	S	
▲ BR70 H13 steel belted radial tyres	O	O		S—Standard O—Optional			

SAFETY FEATURES

▲ Seat belts for all occupants ▲ Energy absorbing steering column and steering wheel ▲ Tandem brake cylinder—diagonally split hydraulic circuits ▲ Safety glass side and rear windows and windscreen

▲ Electrically heated rear window ▲ Quartz halogen headlamps ▲ Glare reduced—safety padded instrument panel ▲ Low profile window regulator handles ▲ Sunvisors—Energy absorbing ▲ Flush fitting lift-up exterior door handles ▲ "Child proof" rear door locks ▲ 2-jet electric windshield washer ▲ 2-speed windshield wipers with glare reduced arms and blades ▲ Back-up lamps

▲ Fusible link in wiring harness ▲ Fan assisted heater demister ▲ Safety rims on both sides of road wheels ▲ Front seat head restraints ▲ Hazard warning flasher ▲ Child restraint anchorages for rear seat ▲ Fuel tank mounted forward of rear axle for protection in rear end impact ▲ Radial-Tuned Suspension ▲ Anti-theft steering/ignition lock ▲ Anti-burst door locks.

CAMIRA SPECIFICATIONS-SL, SLX, SLE

Engine: Camtech 4 (4 cylinder)
Overhead camshaft. Electronic ignition.
Stroke: 79.5 mm Bore: 80 mm
Displacement: 1.598 litres

Compression Ratio: 9.2:1
Power Output: 64kW (DIN) @ 5800 rpm
Torque: 125 Nm (DIN) @ 3800 rpm
Taxable horsepower: (RAC Rating) 15.87

Transmission: 4-Speed Manual, floor console gearshift (5-speed manual SL/E)
Gear ratios: (4-Speed) First 3.55:1
Second 2.16:1 Third 1.37:1 Fourth .97:1
Reverse 3.33:1 Front drive: Drive shafts

from the transaxle unit drive the front wheels
Ratio: 3.737:1 (4-speed Manual)

Radial Tuned Suspension.

Front: MacPherson "Wet Strut," coil springs, stabiliser bar. Negative scrub radius.

Rear: Trailing compound crank rear axle gives similar effect to independent rear suspension.

Double acting shock absorbers, progressive rate coil springs, stabiliser bar.

Steering: Rack and pinion, Variable Ratio.

Brakes: Power assisted front disc/rear drum.

Fuel tank capacity: 60 litres.

Fuel Economy SL, SLX, SLE

City Cycle 9.5 litres per 100 km (29.7 mpg). Highway Cycle 6.4 litres per 100 km (44.1 mpg)**

Fuel consumption figures stated are the results of GMH-administered laboratory tests conducted according to AS 2077-1979 procedures.

Dimensions: ▲ Overall length:

4377 mm (SL) 4399 mm (SLX, SL/E)

▲ Overall width: 1668 mm (SL) 1683 mm (SLX, SL/E)

▲ Overall height: 1363 mm (SL, SLX) 1360 mm (SL/E).

Wheel base: 2577 mm Track/front:

1403 mm Track/rear: 1403 mm.

Turning circle: Kerb to kerb 10.2 m

Towing capacity: 500 kg without trailer brakes. 900 kg with trailer brakes.

Boot capacity: 0.4 cubic metre (402 litres) useable (GM specification) 0.475 cubic metre total (475 litres).

Wheels and Tyres ▲ SL, SLX.

Wheels: 5.5 x 13 JJ Pressed Steel.

Standard Tyres: AR78S13 or P125/75

SR13 tubeless, steel belted radials

▲ SLE. Wheels: 5.5 x 14 JJ Cast alloy.

Standard Tyres: P195/60HR14 tubeless, steel belted radials.

Ground Clearance ▲ SL 126 mm*

▲ SLX 126 mm* ▲ SL/E 128 mm*

* At 4 passenger load.

Estimated kerb weights ▲ SL:

1029kg SLX: 1038kg SL/E: 1054kg

Routine Service Intervals 10,000 kilometres or 6 months.

**4-speed manual transmission.

Copyright General Motors-
Holden's Sales Pty. Ltd.
GMCA 7012
GMH Stock No. AD 10069
Issued December 1982



GMH 12/20 WARRANTY

Every Holden Camira is covered by the GMH New Vehicle Warranty which covers your vehicle for the first 12 months or 20,000 kilometres, whichever occurs first.

A word about this leaflet. We have tried to make this leaflet as comprehensive and factual as possible. However, since the time of printing some of the information you'll find here may have been updated. Also, some of the equipment shown or described through this leaflet is available at extra cost. And the

right is reserved to make changes at any time without notice, in prices, colours, materials, equipment, and models. Your Holden Dealer has details, and before ordering, you should ask him to bring you up to date.

No GMH Dealer or other person is authorised or permitted to give or make any statement assertion or undertaking in relation to the quality performance characteristics descriptions or fitness for any purpose of any GMH product which is at variance with any written statement assertion or undertaking on any of these subjects given or made by General Motors-Holden's Limited or General Motors-Holden's Sales Pty. Ltd. in its published sales literature, and neither company accepts any liability for any such unauthorised action.

General Motors-Holden's Limited and General Motors-Holden's Sales Pty. Ltd. have franchised dealers in many parts of Australia for the sale of service parts and the provision of service to owners of GMH's products. Every endeavour is made to ensure that such dealers carry adequate stocks of service parts, but neither General Motors-Holden's Limited or General Motors-Holden's Sales Pty. Ltd. makes any promise, other than that contained in the New Vehicle Warranty given by General Motors-Holden's Sales Pty. Ltd. that such parts or service facilities will be available at any specific location or at any particular time.

CAMIRA	SL	\$8996	+ ON ROAD COSTS
CAMIRA	SLX	\$9738	+ " " "
CAMIRA	SLE	\$10833	+ ON ROAD COSTS

compliments
Robert Mahoney