

Cimarron



A NEW
KIND OF
CADILLAC
FOR A NEW
KIND OF
CADILLAC
OWNER.

 *Cimarron*

A WORD ABOUT THIS CATALOG: We have tried to make this catalog as comprehensive and factual as possible and we hope you find it helpful. However, since the time of printing, some of the information you will find here may have been updated. Also, some of the equipment shown or described throughout this catalog is available at extra cost. Your dealer has details and, before ordering, you should ask him to bring you up to date.

The right is reserved to make changes at any time, without notice, in prices, colors, materials, equipment, specifications and models. Check with your Cadillac dealer for complete information.

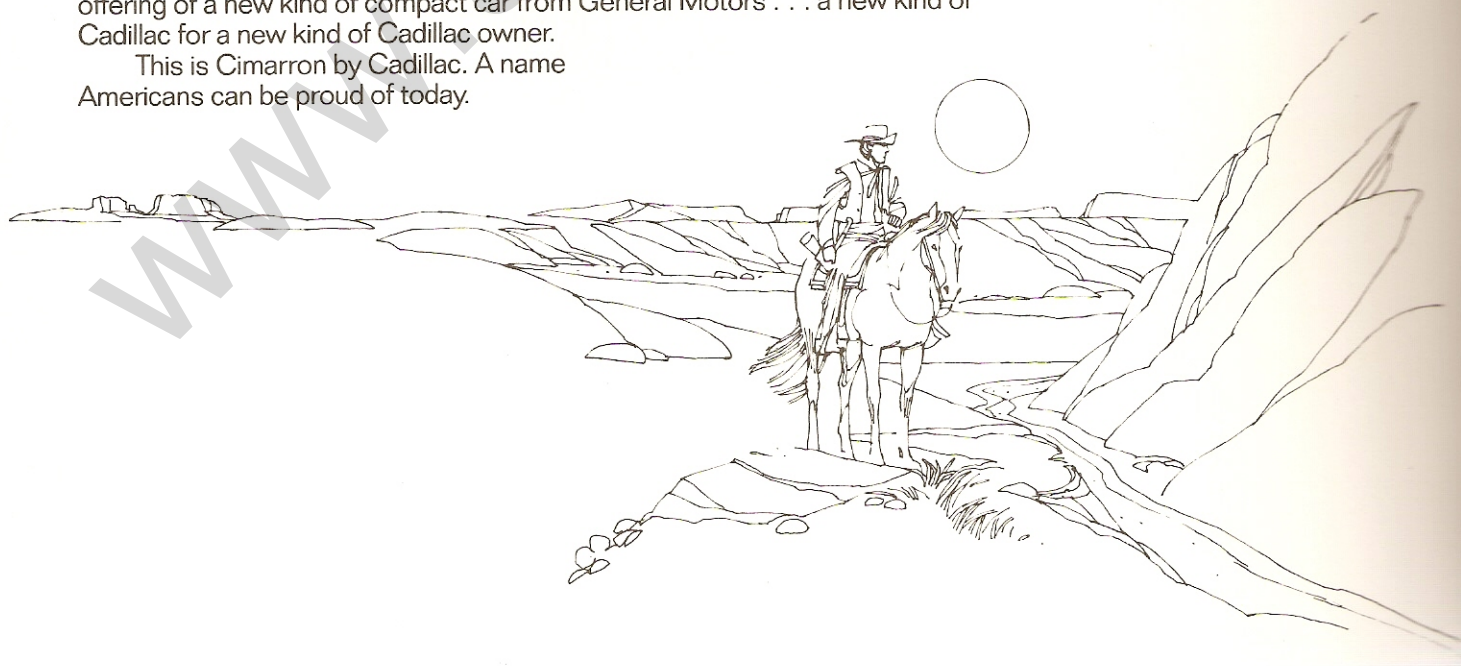
A PROUD AMERICAN NAME LIVES ANEW...

The Chisholm Trail . . . the Comstock . . . the Rio Grande . . . the Missouri . . . the Cimarron. Proud names that fired the imagination of Americans a century ago.

Names that promised adventure and freedom. Names that stood for the fortitude and skill of those who had the courage to pioneer new territories. Names that became monuments to a new way of looking at things and then doing them better.

And now, the name Cimarron lives again to lead the way in a Cadillac offering of a new kind of compact car from General Motors . . . a new kind of Cadillac for a new kind of Cadillac owner.

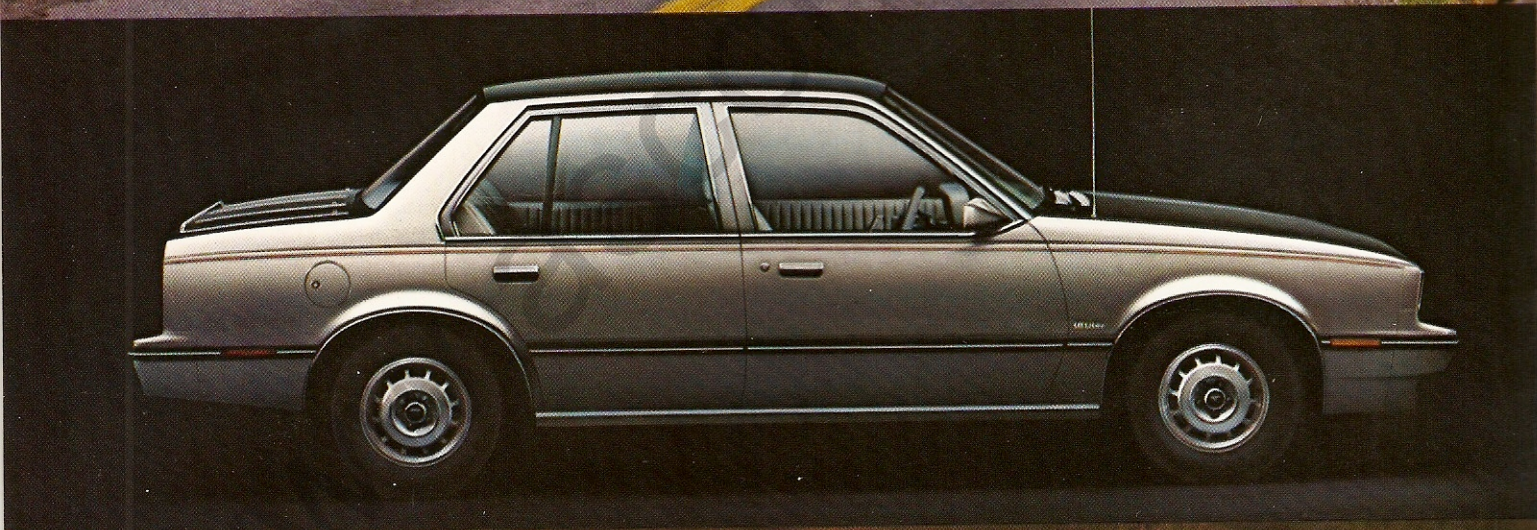
This is Cimarron by Cadillac. A name Americans can be proud of today.



**QUICK-HANDLING...
ROAD-HUGGING...
RESPONSIVE.**

At first glance, you know Cimarron is a different kind of luxury car. Beneath the beautiful, hand-buffed Cimarron exterior finish is the exclusive Cadillac-tuned touring suspension. As much at home on a demanding Alpine road as it is relaxed on the Interstate. Front-wheel drive pulls you over wet,

snowy surfaces with truly impressive traction. MacPherson struts up front and semi-independent rear suspension are ready to do battle with pot-holes and puddles. And stabilizer bars, front and rear, give you an added measure of firmness in tight turns.



YOU ARE IN COMMAND.

Slip behind the leather-wrapped steering wheel. Relax into the body-contoured perforated leather-faced bucket seat with lumbar support. This...is Cimarron by Cadillac. With full instrumentation ...including tachometer, oil pressure

gauge and voltmeter. And four-speed manual or optional three-speed automatic transmission. Isolated from road noise by the acoustical insulation package. With air conditioning at hand. Go on...turn the key. You are in command.

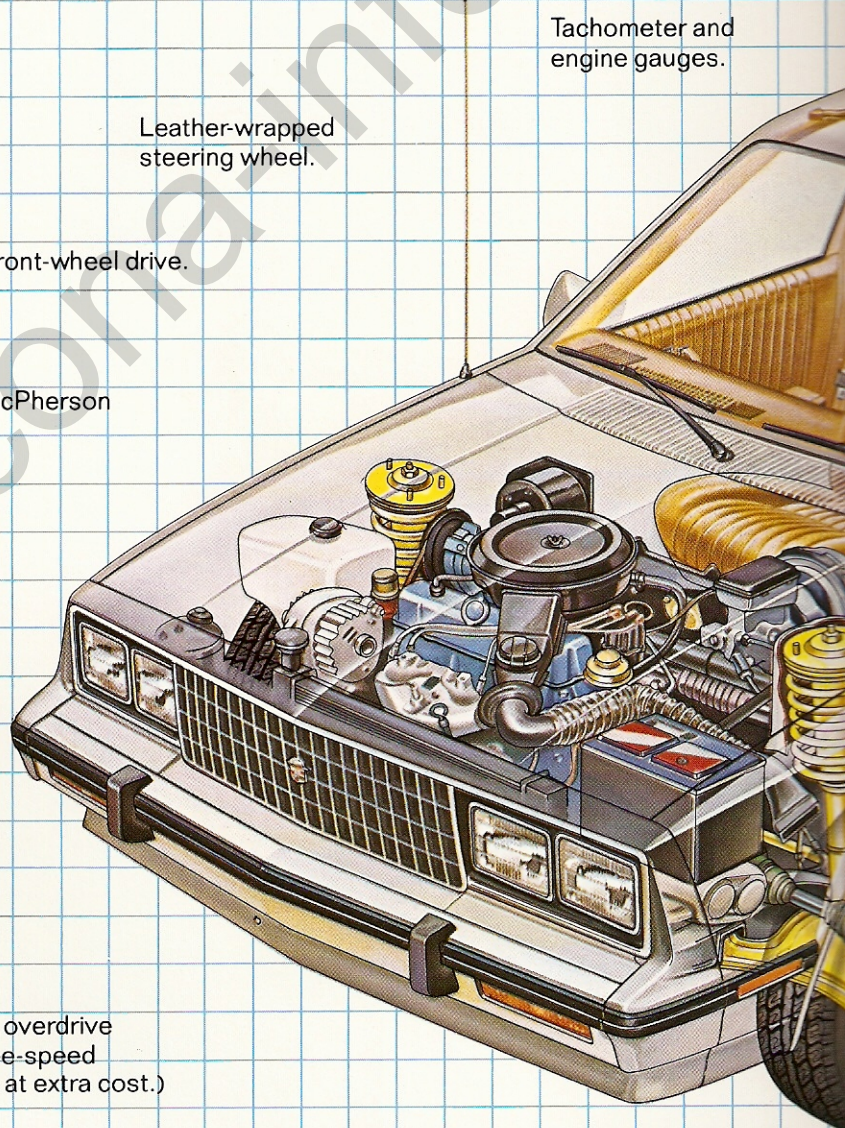


THIS IS THE NEW *Cimarron*

WITH ALL THIS STANDARD...AN
EXTRAORDINARY VALUE.

OTHER STANDARD FEATURES INCLUDE...

Air conditioning • AM/FM stereo radio with four speakers (extended frequency response in rear) and digital clock (may be deleted for credit) • transverse-mounted engine to help provide interior roominess • electrically remote controlled outside rearview mirrors • locking fuel filler door with built-in fuel cap holder to help prevent cap loss • extensive anti-corrosion measures • dual color painted accent stripes • copper-nickel-chrome-plated bumpers • bumper guards, end caps and rub



Tachometer and
engine gauges.

Leather-wrapped
steering wheel.

Front-wheel drive.

Fully independent MacPherson
strut front
suspension.

Power-assisted rack and
pinion steering with responsive
14:1 steering gear ratio.

Four-speed manual overdrive
transmission. (Three-speed
automatic available at extra cost.)

Aluminum alloy wheels
...with computer-matched
radially ground tires.

strips • body side moldings • reclining front bucket seats with adjustable contoured headrests • deluxe front floor console • seatback and front door pockets • side window and rear window defoggers • Cadillac specific rear axle arm bushings for ride firmness and smoothness • passenger visor vanity mirror • assist handles • courtesy lights • rear seat armrest • Soft Ray tinted glass • controlled cycle wipers • tungsten halogen highbeam headlamps • dual-tone horn *and much, much more.*

FEATURES AVAILABLE INCLUDE...

Power Astrorooftop with pop-up air deflector, rear tilt-open feature and sliding sunshade (reduces headroom slightly)* • Twilight Sentinel* • three-speed automatic transmission with torque converter clutch and performance 3.18:1 final drive ratio • GM Continuous Protection Plan (see your Cadillac dealer for details) • electronically tuned AM/FM stereo radio with cassette player and four speakers* • cruise control • tilt steering wheel • power door locks • power windows • electric remote deck lid release • six-way power front seats • deck lid luggage rack • door edge guards • carpeted floor mats front and rear • trunk mat • illuminated visor vanity mirrors for driver and passenger • white stripe steel-belted radially ground tires • heavy-duty battery • heavy-duty radiator • engine block heater • California emissions.
*Check dealer for availability.

Genuine leather seating areas for five.

42 HWY. EST., **26** EPA EST. MPG with manual transmission. Use estimated mpg for comparison. Your mileage may differ depending on speed, distance, weather. Actual highway mileage lower.

Stabilizer bars—front and rear.

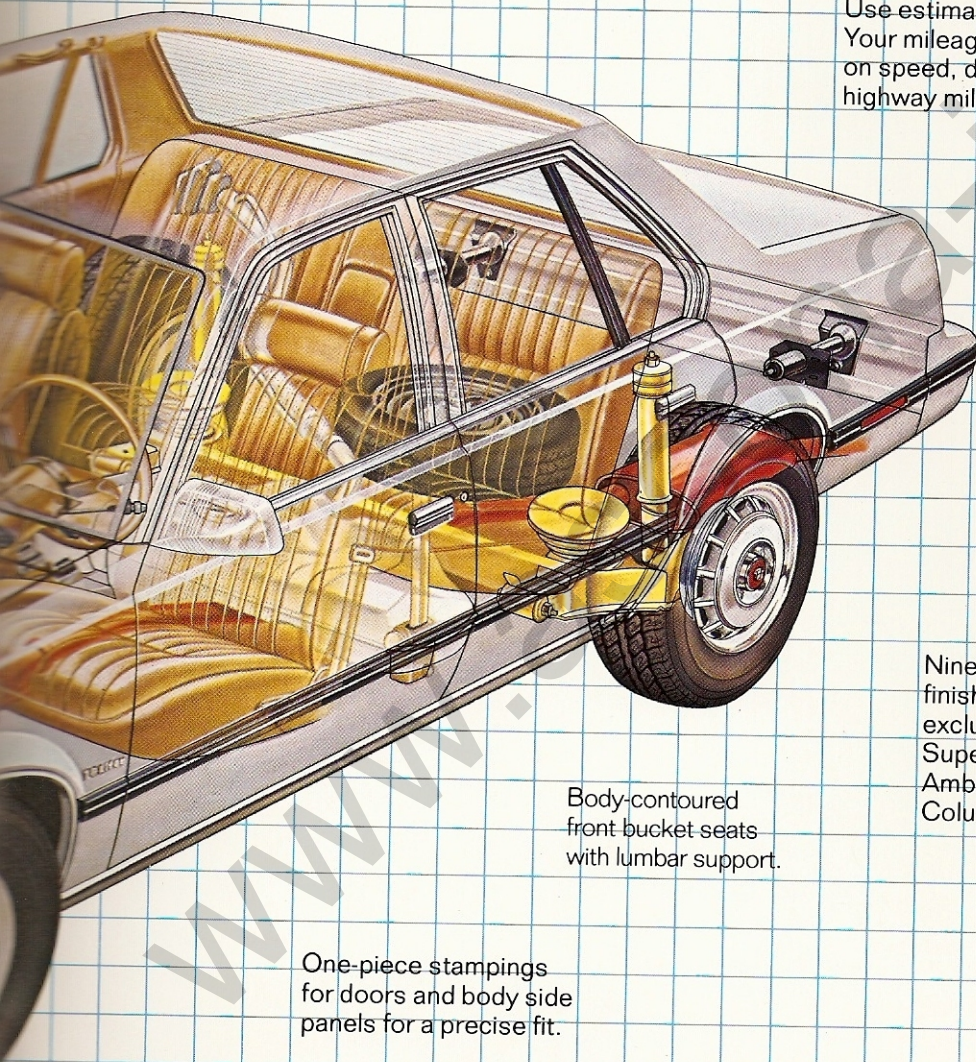
Semi-independent rear suspension with load-compensating variable rate springs.

Nine hand-buffed exterior finishes, including four exclusive metallics: Superior Blue, Autumn Amber, Garnet and Columbian Brown.

Body-contoured front bucket seats with lumbar support.

One-piece stampings for doors and body side panels for a precise fit.

Same front legroom as some full-size cars.



THIS IS THE NEW
Cimarron

42 HWY. EST., [26] EPA EST. MPG*
WITH CADILLAC COMFORT AND QUALITY.



Nimble. Road-hugging. And fun to drive. This...is Cimarron. An efficient new kind of Cadillac for a new kind of Cadillac owner. the traction of front-wheel drive...MacPherson front suspension...power-assisted rack and steering...and Cadillac's exclusively tuned, road-hugging touring suspension. us, it has special Cadillac touches...including

genuine leather seating areas for five... air conditioning... leather-wrapped steering wheel... Trianon deep-pile carpeting... carpeted trunk... full instrumentation including tachometer and more. Along with the same front legroom as some full-size cars, and front power disc brakes. All standard.

*Use estimated mpg for comparison. Your mileage may differ depending on speed, distance, weather. Actual highway mileage lower.



HOW THE NEW *Cimarron*

BEATS THE IMPORTS
AT THEIR OWN GAME.

	CIMARRON	AUDI 5000	BMW 320	VOLVO GLE	SAAB 900S SEDAN
EPA MILEAGE RATINGS WITH STD. TRANS. HWY. EST./EPA EST. MPG*	42 / 26	33 / 19	36 / 25	25 / 16	33 / 21
FRONT-WHEEL DRIVE	STANDARD	STANDARD	NOT AVAILABLE	NOT AVAILABLE	STANDARD
FOUR-SPEED MANUAL INCLUDING OVERDRIVE	STANDARD	STANDARD 5-SPEED	STANDARD 5-SPEED	STANDARD	STANDARD 5-SPEED
TACHOMETER	STANDARD	EXTRA COST	STANDARD	STANDARD	STANDARD
POWER-ASSISTED RACK AND PINION STEERING	STANDARD	STANDARD	RACK AND PINION ONLY	STANDARD	STANDARD
EPA PASSENGER COMPARTMENT VOLUME	89 CU. FT.	90 CU. FT.	82 CU. FT.	89 CU. FT.	89 CU. FT.
ALUMINUM ALLOY WHEELS	STANDARD	EXTRA COST	EXTRA COST	STANDARD	STANDARD
AIR CONDITIONING	STANDARD	EXTRA COST	EXTRA COST	STANDARD	DEALER INSTALLED OPTION
AM/FM STEREO RADIO	STANDARD (may be deleted for credit)	EXTRA COST	EXTRA COST	DEALER INSTALLED OPTION	DEALER INSTALLED OPTION
LEATHER-WRAPPED STEERING WHEEL	STANDARD	NOT AVAILABLE	EXTRA COST	DEALER INSTALLED OPTION	NOT AVAILABLE
LEATHER SEATING AREAS FOR FIVE	STANDARD	EXTRA COST	NOT AVAILABLE	STANDARD	NOT AVAILABLE

The above as of 7-1-81.

Cimarron is a 1982 model. imports are 1981.



As you see, Cimarron has features that some of the best imports have. All standard. Plus, it has Cadillac touches and refinements. Everything for a reason...an extraordinary value. Before you buy—or lease—test-drive Cimarron by Cadillac.

*Use estimated mpg for comparison. Your mileage may differ depending on speed, distance, weather. Actual highway mileage lower.



Cimarron

SPECIFICATIONS

Engine Displacement	1.8 liters (112 cu. in.)
Fuel Tank Capacity	53.0 liters (14.0 gal.)
Electrical	
Freedom II® Battery— Delco Remy F 13	12 volt, negative ground, side terminals. No filler/vent caps.
Generator	85 amp.
Transmission	
Final-Drive Ratios	
Manual 4-spd.	3.65:1
Automatic 3-spd.	3.18:1
Front Suspension	Fully independent MacPherson strut with stabilizer bar
Springs	Steel coil
Shock Absorbers	Integral in strut
Rear Suspension	Semi-independent, trailing arm—twist axle with stabilizer bar
Springs	Variable rate, steel coil
Shock Absorbers	Tubular direct acting
Brakes	Power disc and drum—self adjusting
Master Cylinder	Dual hydraulic
Power Booster	Tandem vacuum
Front	Single piston sliding calipers, vented rotors
Parking Brake	Hand lever
Action	Pull on, push-button release
Telltale Light	Indicates brake malfunction or parking brake applied
Linings	Audible wear indicators front only
Steering	Power rack and pinion
Gear Ratio	14:1
Wheels & Tires	
Tires, GM specification steel-belted radials	
Sidewall	Black
Size	P195/70R13
Wheels	13" x 5.5" JB styled Aluminum

Overall Measurements

Front Tread Width	1,406 mm (55.4")
Rear Tread Width	1,401 mm (55.2")
Turning Diameter (curb-to-curb)	10.5 M (34.4 ft.)
Wheelbase	2,571 mm (101.2")
Overall Length	4,394.5 mm (173.0")
Overall Height	1,321 mm (52.0")
Body Width	1,652 mm (65.0")
Curb Weight	1,175.2 kg. (2,590.9 lbs.)
Seating Capacity F/R	2/3
Headroom Front	970 mm (38.2")
Headroom Rear	952 mm (37.5")
Legroom Front	1,072 mm (42.2")
Legroom Rear	870 mm (34.2")
Shoulder Room Front	1,348 mm (53.1")
Shoulder Room Rear	1,350 mm (53.1")

CIMARRON SAFETY FEATURES.

Occupant Protection—Manual lap/shoulder belts for driver and right front passenger (driver's side includes visual and audible warning system). • Manual lap belts with push-button buckles for rear passenger positions. • Energy-absorbing steering column. • Passenger guard door locks. • Safety door latches and stamped steel hinges. • Folding seatback latches. • Energy-absorbing padded instrument panel and front seatback tops. • Laminated windshield/tempered side and rear glass. • Safety armrests. • Identification symbols for controls and displays.

Accident Avoidance—Side marker lights and reflectors. • Parking lamps that illuminate with headlamps. • Four-way hazard warning flasher. • Backup lights. • Lane change feature in direction signal control. • Windshield defrosters, washer and variable speed wipers. • Vinyl-edged inside mirror. • Outside rearview mirrors. • Dual-master cylinder brake system with warning light. • Starter safety switch. • Dual-action safety hood latches.

Anti-Theft—Anti-theft ignition key reminder chime tone. • Anti-theft steering column lock. • Inside hood release.

ENGINE AVAILABILITY FOR CIMARRON

Engine	Order Code	Displacement (cubic inches)	Availability
1.8 Liter Four Cylinder* with GM's Computer Command Control	L46	112	Standard

*Produced by GM—Chevrolet Division

A WORD ABOUT ASSEMBLY, COMPONENTS AND OPTIONAL EQUIPMENT IN THIS CADILLAC.

Cimarron is Cadillac's offering of General Motors all-new compact J-vehicle. The Cimarron described in this brochure is assembled at facilities of General Motors Corporation operated by GM Assembly Division for Cadillac Motor Car Division. These vehicles incorporate thousands of different components produced by various divisions of General Motors and by various suppliers to General Motors. From time to time during the manufacturing process, it may be necessary, in order to meet public demand for particular vehicles or equipment, or to meet federally mandated emissions, safety and fuel economy requirements, or for other reasons, to produce Cadillac products with different components or differently sourced components than initially

scheduled. All such components have been approved for use in Cadillac products and will provide the quality performance associated with the Cadillac name.

With respect to extra cost optional equipment, make certain you specify the type of equipment you desire on your vehicle when ordering it from your dealer. Some options may be unavailable when your car is built. Your dealer receives advice regarding current availability of options. You may ask the dealer for this information. GM also requests the dealer to advise you if an option you ordered is unavailable. We suggest that you verify that your car includes the optional equipment you ordered or if there are changes, that they are acceptable to you.

A WORD ABOUT ENGINES. Cadillacs are equipped with GM-built engines produced by various divisions. See your dealer for details.

THE CADILLAC COMMITMENT.

We believe that when you buy or lease a Cadillac, you deserve to be treated like a Cadillac owner. And when you take your car in for service, you have the right to expect the type of consideration traditionally reserved for Cadillac owners. We intend to keep that tradition alive.

www.ascona-info.de